

**h  
c  
e  
t  
e  
c  
h  
n  
o  
l  
o  
g  
y**

A glowing blue wireframe car is shown from a side profile, set against a background of a light blue grid. The car's headlights are illuminated, and the overall aesthetic is futuristic and technological.

# **ETI ToolTech 2014**

# ETI Business Meeting

**1:00pm to 1:15pm**

Call the Meeting to Order:  
Charlie Gorman  
Financial Report  
State of the Association  
Report on the Election Results

**1:15pm to 1:30pm**

Change of Command  
Ceremony:

**1:30pm to 2:15pm**

Technical Report: Charlie  
Gorman

**2:15pm to 2:35pm**

Marketing and Event Report:  
Jessie Korosec  
ToolTech 2015 Announcement

**2:35pm to 3:05pm**

Collision Repair Market  
Research Survey Report: Tim  
Morgan

**3:05pm to 3:30pm**

NASTF Report: Skip Potter

# ETI Business Meeting

- Call to Order
- Anti Trust

It is ETI's policy to comply strictly with all federal and state antitrust laws and related legal requirements in order to avoid any antitrust improprieties. During ETI meetings, agendas will be strictly followed and there will be no discussion of boycotts, Price fixing, or any other antitrust sensitive subjects.

## Financial Statement

- 2013 income was \$700,736
- 2013 total expense was \$628,241
- Net Income was \$ 72,495
- This was \$68,451 above budget
- Member Equity at year end was \$916,695

# Membership Report

## Associate

Identifix Inc  
TG Products  
CanDo  
Auto Meter

## Full Traditional

InPower LLC  
Injectoclean SA  
EOS S.r.l.  
Control Tec  
Automotive Elect. NZ  
SP Diagnostics  
Texa  
UView Ultraviolet  
Cardone

## Full Connected Vehicle

OpenCar Inc  
Bright Star Engineering  
Syn-Tech Systems  
AnyDATA  
National Research  
Council Canada  
Wiretronic AB  
BSM Wireless  
Carman  
Nebula  
Bright Lot

## State of the Association

- In 1992, when I first volunteered, the largest vertical group was PTEG or Performance Test Equipment Group
  - Large Machines
  - I/M was a subcommittee (more large machines). I was the chairman
- The writing was on the wall – large equipment in both segments was doomed
  - Scan tools would take over both
  - And they have, but we were ready. We planned for it.
- We are undergoing another change now.

# State of the Association

- The Connected Vehicle!
  - Tool and Equipment companies interested in remote vehicle connectivity will change the Institute forever
  - They are already joining at a faster rate than any other segment.
  - Either we recognize this change and advocate for these companies, or someone else will.
  - Now you know why our theme is the connected vehicle.

## State of the Association

Advocating for ETI's future with the connected vehicle will require all of the following:

- A long term commitment. This will not be an easy trek.
- A larger staff with special skills
- Larger and improved computer and web support services
- The ability to become a global organization
- A closer relationship with all stakeholders including the OEMs

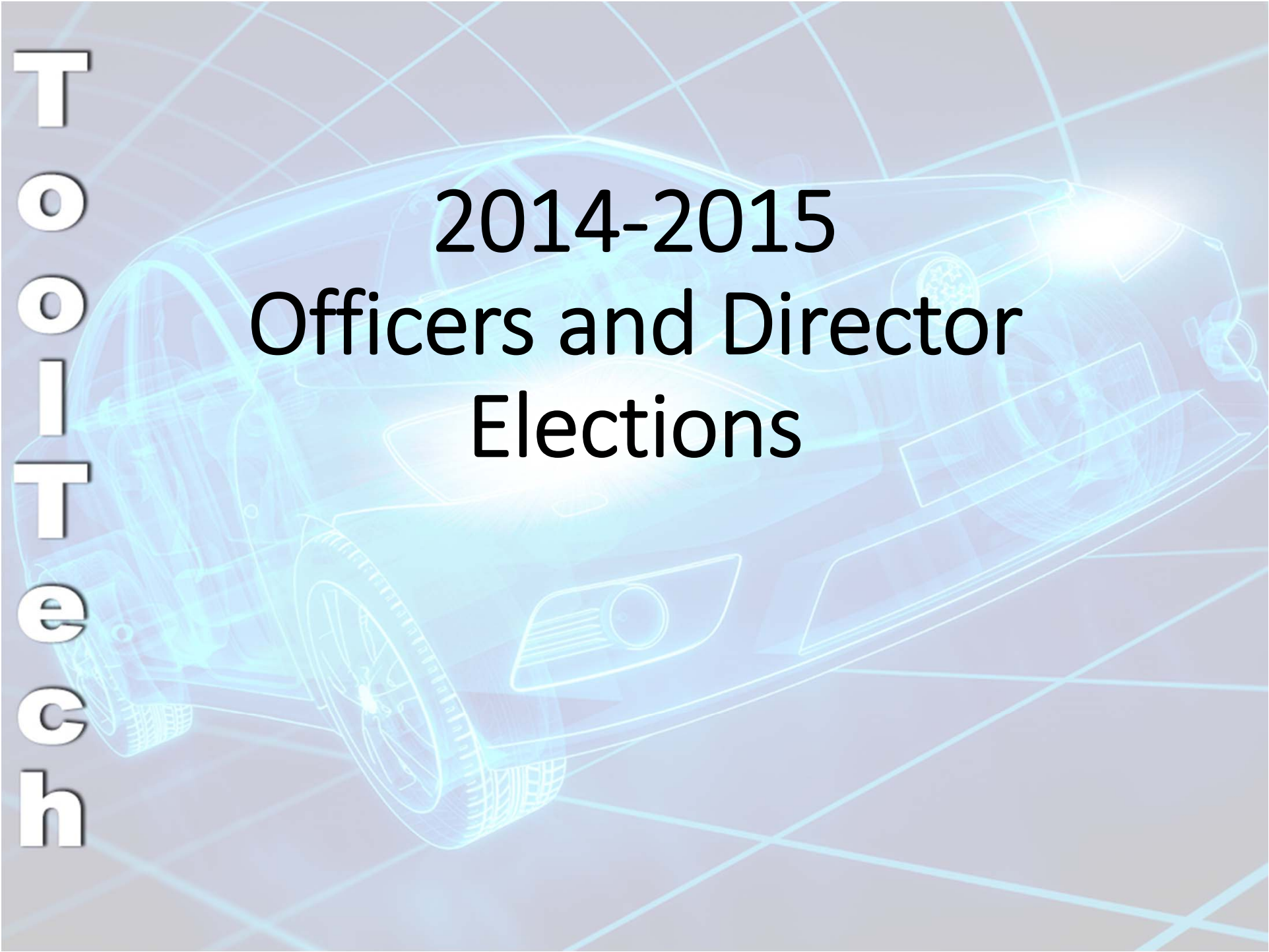


## State of the Association

- I will be stepping down as Executive Manager at the end of the year.
  - We are at a turning point to a new and lengthy undertaking and I'm at the end of my career.
  - Its time for me to go.
- I will be staying on in a support role to help the new Executive Manager with the transition well into 2015.
- We have someone in mind to take my place, but there will be no announcement for some time.

**T  
O  
O  
T  
E  
C  
H**

# 2014-2015 Officers and Director Elections



## ETI 2014-2015 Officers

- President: Neil Davis (Snap-on Diagnostics)
- VP Programs: Tim Morgan (Spanesi)
- VP Marketing: Bob Holland (Chief Technologies)
- Secretary/Treasurer: Brian Herron (DrewTech)
- Technical Director: David Rich (Innova)

## Board of Directors

Individuals filling open and expired board seats

Three-year terms:

- Robert Vogt (IOSiX, LLC)
- John Heist (STAR EnviroTech)
- Kevin FitzPatrick (Autologic)

Two-year term:

- Pete Richardson (Car-O-Liner)

# Board of Directors

Current Board Members not up for election are  
Terms expiring in 2015-2016:

- David Rich (Innova Electronics) (Technical Director)
- Dennis Keane (Bosch Service Solutions)
- Kathy Kedzior (Mahle Clevite)

Terms expiring in 2016-2017

- Greg Potter (DG Technologies)
- Jim Fish (Bosch Automotive Service Solutions)

T  
O  
O  
I  
T  
E  
C  
H

# ETI's Current President Ben Johnson

Mitchell One (a Snap-on Company)

# Service Gift



## Product Availability



**Delivery:** Most Areas  
[Check Dates](#)



**Store Pickup:**  
[Check Stores](#)  
[Learn more about store pickup](#)

## Special Offers



[See \(2\) Special Offers](#)

## Cardholder Offers



[See \(2\) Financing Offers](#)

**T  
O  
O  
T  
H  
C  
H**

A glowing blue wireframe car is centered on a grid background. The car is shown from a three-quarter front view, with its headlights and wheels highlighted. The grid lines are light blue and intersect to form a perspective grid.

# ETI's President Elect Neil Davis

Snap-on Diagnostics



**T  
O  
O  
T  
H  
C  
H**

# Technical Committee Report

**Charlie Gorman**



**T  
O  
O  
T  
H  
C  
H**

# Marketing and Event Report

Jessie Korosec

**T  
O  
O  
T  
H  
C  
H**

# ETI Market Research Collision Repair

Tim Morgan

**T  
O  
O  
T  
H  
C  
H**

# **NASTF Report**

**Skip Potter**

